



GRAND
INFLATABLE BOATS



WHY GRAND?

1. A Proven Track Record of Success

Over the past 15 years we have manufactured and developed a highly successful product range. The current catalogue includes craft for recreational as well as professional users including RIBs, foldable boats and canoes together with a comprehensive range of accessories. Our company is now recognized as one of the market leaders in the field of Inflatable Boats.



3. Safety is Our Primary Consideration

Our primary consideration is to provide a safe environment for Our Customers. The safety aspects of every new model are therefore thoroughly reviewed at the start of the design process. Regardless of which model you choose; be it our baby E210 or perhaps an S330L tender for your yacht or the fabulous G850 Day Cruiser — you will always feel safe in a GRAND Inflatable Boat.



2. Innovations are the Hallmark of Our Success

The ability to continually innovate and refine our production processes is one of the key ingredients in GRAND's success. By utilizing state of the art engineering and design processes combined with an extensive research and development program we have not only raised the bar in terms of quality but have also been able to provide some of the finest contemporary naval architecture available!

4. A Totally European Product

Every GRAND boat is built in Europe without compromise in terms of workmanship, materials, engineering and quality. By combining aerodynamic principles with advanced design and manufacturing concepts we provide our customers with boats in which every component is quality assured and traceable to its source. That's a high standard to maintain but we wouldn't have it any other way!



5. A Wide Range of Boats

Our range now stands at over 50 models, which together with a comprehensive list of options and accessories means you can select and equip your boat to meet your precise personal requirements. In addition, we offer a wide range of color schemes for the tubes, GRP and upholstery providing you with the opportunity to create something truly unique.

6. International Distribution and Dealer Network

A fast and reliable distribution network is an essential part of any successful multinational business because it enables customers to get products and services when they need them. GRAND's worldwide network of Authorized Distributors and Dealers provides our customers not only with great boats and accessories but also first class sales and service backup.



7. ISO9001 Certificate

As part of our focus on continually improving our products and services we are delighted to announce that we have recently achieved ISO 9001:2015 status. ISO 9001 is the international standard for quality management systems and is recognized in over 170 countries. The standard is based on a number of quality management principles including a strong customer focus, the motivation and engagement of top management, the process approach, and continual improvement. Using ISO 9001 helps us ensure that customers consistently receive quality products and services, which in turn brings many shared business benefits.



8. Model Range – Continual Improvement

There was nothing ever made that could not be done a little better and this is why we regularly review and update our model range in order to reflect the latest trends in design and safety. We are not a Company that rests on its laurels and our policy of Continual Improvement has resulted in many of our models becoming “classics” of their type.



9. Inflatable Tubes with Profiled Fiberglass Step Ends

The majority of our RIBs include, as standard equipment or as an option, a feature developed by GRAND — inflatable tubes with Profiled Fiberglass Step Ends.

The advantages include:

- They are a particularly useful feature when swimming, boarding or docking
- They are safe and comfortable to stand or sit on when the boat is at rest.
- They work as a passive trim-tab, pushing the bow down when under way.

Once you have enjoyed the advantages of our Step Ends you won't want to be without them!

10. High Quality and Fair Prices

Our definition of "Quality" is that the product meets not only our Customers requirements but also those set out in international standards such as International Standards ISO/FDIS-6185, ISO 12217 and the European Union Directive 2013/53/EU. Our internal quality management procedures are amongst the highest in the industry so the challenge has been to achieve this at a cost that ensures good value for money. Based on the feedback we receive from our customers we seem to be doing this rather well!

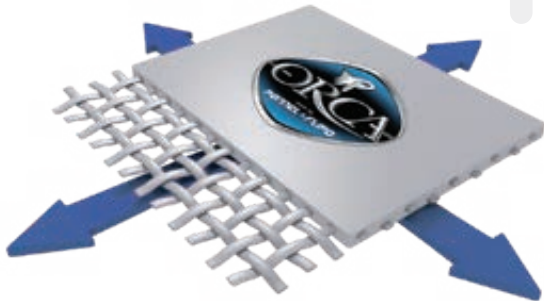


11. Style and Practicality

We believe that in order to achieve an overall success with the design brief it is also important to combine style with practicality. Our designers pay particular attention to the ergonomics as well as the elegance of their designs, the results of which we hope our customers will really appreciate!

12. Best Materials for Best Boats

GRAND's inflatables are made from five layers of 1100Dtes Polyester fabric and 1680 Dtex, which is reinforced with MIRASOL and HEYTEX fabrics to ensure outstanding durability and abrasion resistance. Where HYPALON tubes are specified we use ORCA® engineered fabric which provides the quality, strength and durability necessary to ensure customers receive the best performing products available. These fabrics combined with our new HTL adhesive ensures our products possess a high level of structural integrity and the ability to withstand temperatures of up to 90°C!





13. SeaDek High Performance Flooring

GRAND boats are now available with SeaDek high performance flooring. SeaDek® is manufactured in the USA from a nonabsorbent, closed cell copolymer material specially formulated for marine applications. This material is an innovative, textured micro-dot surface with enhanced non-slip characteristics. SeaDek is a durable UV resistant non-absorbable material providing protection for boat surfaces, especially in high traffic areas. Other SeaDek benefits include:

- Exceptional traction even when wet
- Unparalleled comfort when standing, walking or leaning on boat surfaces
- Shock absorption, which decreases fatigue
- Protection for boat surfaces against scratches, chips and dents
- Noise reduction characteristics — ideal for fishermen

SeaDek is specially formulated for marine applications and will further enhance both the appearance and safety features of our boats.

14. Unique Designs and Technical Perfection!

Every GRAND model incorporates a unique combination of innovative techniques, patented designs plus many years of experience and expertise. By utilizing the latest CAD/CAM technology with the most advanced software, every GRAND is perfected to the smallest detail to ensure the utmost quality. Once the prototype model has been constructed, it is subjected to an extensive range of sea trials in the toughest conditions before it sees a showroom floor! After every production stage each boat passes a strict quality control test against a challenging set of parameters and all models are required to pass CE certification before series production begins.

15. Incomparable Pleasure and Comfort

In choosing any GRAND model you will not only get a high quality boat, but also the invaluable pleasure of spending time with your family and friends in natural surroundings; as well as appreciating the comfort and outstanding handling characteristics of your GRAND Inflatable Boat.





GOLDEN LINE

GRAND Golden Line RIBs are designed for customers seeking a boat that reflects a high degree of individuality, luxury and character. The Series includes boats ranging from 3.3m to 8.5m in length. If you are looking for a boat that personifies the Spirit of Discovery then our Golden Line RIBs will definitely meet your needs.



G850



Our new Golden Line G850 is the flagship of the GRAND fleet. This magnificent 8.5 meter Day Cruiser combines performance with all the modern comforts associated with a luxury RIB.

The general arrangement follows a classic layout with generous sunbathing areas both at bow and stern, ergonomically designed helm and passenger seating with cooling drawer and space for a sink and hob unit.

Our U-form seating in the rear of the cockpit will easily accommodate both friends and family. The lifting hatch at the forward end of the steering console provides access, via molded in steps, to the large compartment, which can accommodate both a marine WC and sink. The hull meets the requirements of CE category B so when the water gets rough the robust Deep “V” hull will offer great stability. At high speeds this craft certainly makes a statement with its superb driving dynamics and precision handling. With single or twin engine options together with an extensive range of optional equipment the G850 will meet all your requirements for performance, comfort, safety and enjoyment.



G850GL

with optional bimini top,
table and bicolor
upholstery

Features:

G850L — G850GL



1. The possibility of using dual engines for professional use. **2. Huge dashboard** with plenty of space for a variety of instruments and electronics. **3. The integrated swimming platforms** are both stylish and functional.

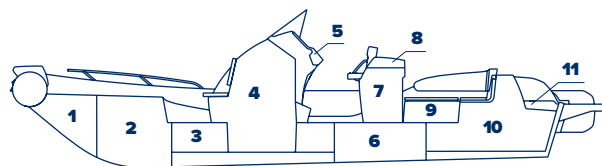
With the wind in your face
experience the unparalleled
excitement of being out on the
water in your own G850!



G850



G850L



COMPARTMENTS CHART

1. Bow anchor storage
2. Bow locker
3. Under deck storage
4. Console storage
5. Glove box with hatch
6. Fuel tank compartment
7. Double seat/cooling drawer/storage
8. Wash basin/hob unit
9. Two side storage boxes
10. Rear storage
11. Rope storage

STANDARD FEATURES:

- Deep-V fiberglass hull with transom extensions, bow towing eye and self-bailing cockpit
- Heavy-duty HYPALON tube
- Anchor locker and bow locker compartment
- Bow step plate with two cleats
- Steering console CL-21 with front lifting seat, windshield, handrail and glove box
- Helm and passenger SD-21 folding seats with hatch cover
- U-form rear seat with two side lockers, soft cushions and high seat back
- Stern locker with large access panel and gas springs
- Two stern handrails, cleats and towing eyes
- Built in fuel system with 300 liter tank and sender
- Electric package with nav. lights, bilge pump, electric horn, switches, battery switch and complete wiring

GRAND LUXE FEATURES:

- Two swimming platforms with folding ladder for one or two engines
- Stainless steel bow rails
- Two rear rope hatches
- Waterski towing arch with GRP top

OPTIONAL EQUIPMENT:

- Rear Sundeck
- Water shower set with pump and 100l tank
- Electric anchor with lifting mechanism
- Hydraulic steering system
- Cooling drawer
- Washdown system
- Removable table with 4 cup holders
- Stainless steel bimini top
- Overall cover, consoles and rear seat covers
- Two overpressure valves
- Keel protector package
- SILVERTEX upholstery upgrade
- SeaDek antiskid set

G650



The Golden Line G650 — another breathtaking creation from GRAND!

This model represents a new and unique concept with several great ideas and features, which makes it a notable event in the boating world. Let's have a look at some of them:

- **A U-form rear sofa-style seat;** a common feature on larger RIBs, but this is the first time it has been so neatly accommodated in a 6.5 m model.
- **The bow tube** has been cleverly curved introducing a nice touch of elegance to the boat's lines.
- **A new concept steering console** incorporating an impressive and spacious dashboard.
- **An elegant helming console** with folding seats and handrails.
- **A stylish and innovative waterski towing arch,** combining the features of the navigation arch with wakeboard or waterski towing capability.

We believe our new Golden Line G650 is one the most beautiful boats our factory has created and we hope it will be much appreciated by our GRAND Customers.



G650GLF

with optional table and
waterski towing arch

Features:

G650L — G650GLF



1



2



3

1. Transom extensions, GRP step ends and swim platforms for performance and comfort. **2. Deep-V hull** with transom extensions for superior performance and soft ride. **3. U-form sofa-style rear seat** with comfortable seat backs and two side rails for performance and comfort.

We believe our new Golden Line G650 is one the most beautiful boats our factory has created and we hope it will be much appreciated by our GRAND Customers.

Waterski towing arch with top

Stainless steel bow railing

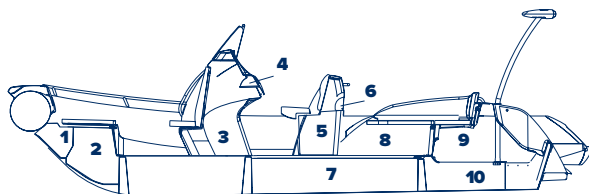




G650



G650LF



COMPARTMENTS CHART

1. Bow anchor storage
2. Bow locker
3. Console storage
4. Glove box with hatch
5. Double seat storage
6. Seat storage shelf
7. Fuel tank compartment
8. Two side storage boxes
9. Main rear storage
10. Lower rear storage

STANDARD FEATURES:

- Deep-V fiberglass hull with transom extensions, bow towing eye and self-bailing cockpit
- Inflatable tube with fiberglass step ends
- Bow locker with anchor compartment and hatch
- Bow step plate with nav. Lights, anchor roller and cleat
- Steering console CL-16, front seat with side rails, windshield with handrail, passenger grab handle and glove box
- Helm and passenger double seat SD-11 with two folding seats
- U-form rear sofa-style seating with two side lockers, soft cushions and high seat back
- Rear locker with large access panel and gas springs
- Rear handrails two rear cleats and towing eyes
- Two front and two rear lifting eyes
- Built in fuel system with 200 liter tank and sender

GRAND LUXE FEATURES:

- Two swimming platforms with folding ladder
- Stainless steel bow rails
- Electric package with nav. lights, bilge pump, electric horn, switches, battery switch and complete wiring

OPTIONAL EQUIPMENT:

- Bow sundeck, rear sundeck and rear sundeck extension
- Water shower set with pump and 50-lit tank
- Waterski towing arch with towing eye and GRP top
- Removable table with 4 cup holders
- Hydraulic steering system
- Steering wheel PERFORMANCE (black)
- Stainless steel bimini top
- Overall cover, consoles and rear seat covers
- Two overpressure valves
- Keel and tube protector packages
- SILVERTEX upholstery upgrade
- SeaDek antiskid set

G580



The GRAND G580 — contemporary styling with performance to match

Introduced in 2017 the G580, whilst retaining the overall styling concept of the series, quickly established its own distinctive characteristics:

- **Updated hull and tube geometry** based on a synthesis of modern design and ergonomics.
- **Dynamic shape** contouring with sweeping lines.
- **Plenty of storage** capacity.
- **Optimal weight distribution** with steering console and double pilot/passenger seats located centrally within the cockpit.

Excellent results have been achieved in terms of seaworthiness and load capacity and other key parameters including the range of outboards proposed. This has been accomplished by combining our proven High Step Hull design with a high deadrise, spectacular contours and attention to detail throughout. In common with all models in the series the G580 is equipped with a comprehensive list of standard equipment plus a wide range of options and accessories. These, together with new upholstery combinations give the boat excellent customer appeal plus a unique identity.



G580GLF

with optional waterski
towing/navigation arch

Features:

G580LF — G580GLF



1



2



3

1. Transom extensions, GRP step ends and swim platforms for performance and comfort. **2. The dashboard has plenty of space** for a variety of instruments and chart plotter of up to 8 inches. **3. The bow step plate** incorporates the navigation lights, a pull up stainless steel cleat and anchor roller.



Stainless steel waterski towing/navigation arch

Stainless steel bow railing

Two swimming platforms with ladder for G580

Glove box with hatch

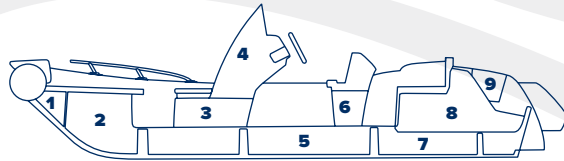
SeaDek antiskid set

The G580 is equipped with a comprehensive list of standard equipment plus a wide range of options and accessories.

G580



G580LF



COMPARTMENTS CHART

1. Bow anchor storage
2. Bow locker
3. Console storage
4. Glove box with hatch
5. Fuel tank compartment
6. Double seat storage
7. Lower rear storage
8. Main rear storage
9. Rear rope storage (left and right)

STANDARD FEATURES:

- Deep-V fiberglass hull with transom extensions, bow towing eye and self-bailing cockpit
- Inflatable tube with fiberglass step ends
- Bow step plate with navigation lights, anchor roller and cleat
- Steering console CL-22 with front seat, windshield, side rails, grab handle and glove box
- Double seat SD-22
- Molded in bow locker with large access cover, anchor compartment and soft cushion
- Rear locker with access panel, lifters, soft seat and seat back
- Two rear pull up stainless steel cleats, two towing eyes
- Two front and two rear lifting eyes
- Two rear rope hatches
- Two front stainless steel cup holders
- Built in fuel system with 90 liter tank and sender

GRAND LUXE FEATURES:

- Two swimming platforms with folding ladder
- Stainless steel bow rails
- Electric package with navigation lights, bilge pump, electric horn, switches, battery switch and complete wiring

OPTIONAL EQUIPMENT:

- Bow removable sundeck set with cushions / table
- Bow removable sundeck extension with cushions
- Water shower set with pump and 50-lit tank
- Stainless steel navigation/waterski towing arch
- Waterski towing/navigation arch with GRP top
- Hydraulic steering system
- Mechanical steering system
- Steering wheel PERFORMANCE (black)
- Stainless steel bimini top
- Overall cover, consoles and rear seat covers
- Two overpressure valves
- Keel and tube protector packages
- SILVERTEX upholstery upgrade
- SeaDek antiskid set
- SILVERTEX upholstery upgrade



G500

The Golden Line G500 represents a fresh approach by our design team.

This 5-meter model is capable of handling engines up to 115hp and is great at riding the waves whilst also delivering the thrills and spills of water sports, keeping up with fish or simply enjoying the excitement of speed over the water. It is one of the safest and most comfortable boats in its class with its light-weight, high-performance structure together with a heavy-duty, Deep “V” hand laid hull and an elegance of design that boaters will readily appreciate.

The helming position is well designed and comfortable while the rest of the cockpit will certainly meet your passengers’ needs.

This new, innovative model has the potential to transform your expectations in terms of performance, family enjoyment and safety.



G500GLF

with optional sundeck
& navigation \ waterski
towing arch

Features:

G500LF — G500GLF



1



2



3

1. **Spacious cockpit** with plenty of storage and sundeck area.
2. **Sports design console and dashboard** for all your electronics and instruments.
3. **Very comfortable seating arrangement** for helm and passengers

It is one of the safest and most comfortable boats in it's class

Waterski towing/navigation arch, polished

Pair of cupholders

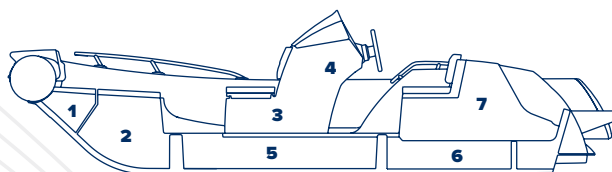
Plenty of space in the bow part



G500



G500LF



COMPARTMENTS CHART

- 1.** Bow anchor storage
- 2.** Bow locker
- 3.** Console storage
- 4.** Glove box with hatch
- 5.** Fuel tank compartment
- 6.** Rear lower compartment
- 7.** Rear dry storage

STANDARD FEATURES:

- Deep-V fiberglass hull with transom extensions, bow towing eye and self-bailing cockpit
- Inflatable tube with fiberglass step ends
- Bow anchor compartment with hatch and soft cushion
- Bow step plate with navigation lights, anchor roller and cleat
- Steering console CL-20 with front seat, windshield, side rails, grab handle and glove box
- Mechanical steering system with steering wheel
- Molded in bow locker with large access cover and soft cushion
- Rear locker with access panel, lifters, soft seat and seat back
- Stainless steel rear handrails
- Two rear pull up stainless steel cleats, two towing eyes
- Two front and three rear lifting eyes
- Built in fuel system with 90 liter tank and sender
- Two front stainless steel cup holders

GRAND LUXE FEATURES:

- Two swimming platforms with folding ladder
- Stainless steel bow rails
- Electric package with navigation lights, bilge pump, electric horn, switches, battery switch and complete wiring

OPTIONAL EQUIPMENT:

- Removable bow sundeck with cushion
- Water shower set with pump and 50-lit tank
- Stainless steel navigation/waterski towing arch
- Steering wheel PERFORMANCE (black)
- Stainless steel bimini top
- Overall cover, consoles and rear seat covers
- Two overpressure valves
- Keel and tube protector packages
- SILVERTEX upholstery upgrade
- SeaDek antiskid set

G480



This **GOLDEN LINE G480 Rider** certainly pushes the envelope in terms of contemporary naval architecture and engineering whilst not forgetting the desirability of elegance within the overall design.

With an impressive list of standard features, together with a thoughtful options list, this model will undoubtedly serve the needs of both versatile and adventurous boaters.

With its first-rate performance, stylish looks and plush appointments, this GOLDEN LINE Rider certainly delivers a high level of luxury boating, offering a first-class seat to enjoy the world in style! The G480 is available in two options with Hypalon and PVC tubes:

- **The DELUXE version (G480LF)** — high-profile boat for cruising and watersports, equipped with high-profile console with windshield and stainless steel navigation arch.
- **The ELITE version (G480EF)** — low-profile boat as a yacht tender, equipped with low-profile steering console and two stainless steel side rails.

Both models are equipped with fiberglass step ends with large steps for easy boarding and swimming.



G480EF

with optional waterski
towing arch

Features:

G480LF — G480EF



1




2



3

1. Exceptional performance, with a smooth ride even on high waves!
2. HSH hull system and transom extensions are the key features of this unique design. **3. Spacious and elegant cockpit** provides plenty of sunbathing space and storage.



Low-profile steering console

Convenient handrails for additional safety

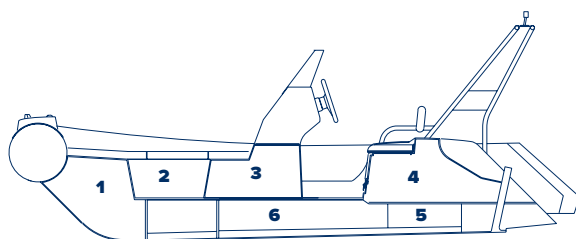
Fiberglass step ends

A great boat for all kinds of activities and watersports

G480



G480LF



COMPARTMENTS CHART

- 1.** Bow locker
- 2.** Bow side storage
- 3.** Console storage compartment
- 4.** Rear dry compartment
- 5.** Lower bilge compartment
- 6.** Fuel tank compartment

STANDARD FEATURES:

- Deep “V” hand-laid fiberglass hull with HSH system, transom extensions and spray protection system
- Inflatable tube with fiberglass step ends
- Wide bow step plate with pull-up cleat and navigation light
- High-profile steering console with windshield and stainless steel handrail (G480LF)
- Mechanical steering system with steering wheel
- Low profile steering console with stainless steel handrail (G480EF)
- Molded in bow and rear stowage with cushions
- Bow grab handle and onboard safety grab handles
- Two stainless steel side rails for rear seat (G480EF)
- Towing bow eye, one front and two rear lifting eyes
- Two rear pull-up cleats
- Antiskid deck surface, hull drain plug and hull vents
- Stainless steel navigation arch with two handrails (G480LF)
- Cockpit drain system with one-way drain valve
- Doubled tough raised rubbing strake with splash guard

GRAND LUXE FEATURES:

- Built in 55 liter fuel tank with filler, vent and sender
- Electric package with navigation lights, bilge pump, electric horn, switches, battery switch and complete wiring

OPTIONAL EQUIPMENT:

- Removable sundeck with cushion
- Stainless steel waterski towing mast
- Removable bow table
- Bimini top
- Overall cover, console cover
- Overpressure valve
- Keel and tube protector packages
- SILVERTEX upholstery upgrade
- SeaDek antiskid set

NEW MODEL!



G420

Our new Golden Line G420: equally at home as a high specification tender or mid-size family runabout.

We are delighted to introduce the new G420, the latest in the Golden Line Series. The design follows the well-established GRAND contemporary design philosophy with a bright, dynamic appearance and aerodynamic lines.

Whilst filling an important niche in the mid-size luxury tender market this model, with its classic layout, performs equally well as a high specification family runabout.

The proven High Step Hull design ensures excellent maneuverability combined with dynamic stability and impressive speed capability. Safety handrails are fitted as standard on the port and starboard side of the ergonomically designed pilot/passenger seats and steering console. Stainless steel bow rails are also available as an option.

As with all models in the Golden Line Series, the G420 is equipped with a comprehensive list of standard equipment plus a wide range of accessories including a 55 liter built in fuel tank, that will enhance the boat's range and add to its unique individuality.

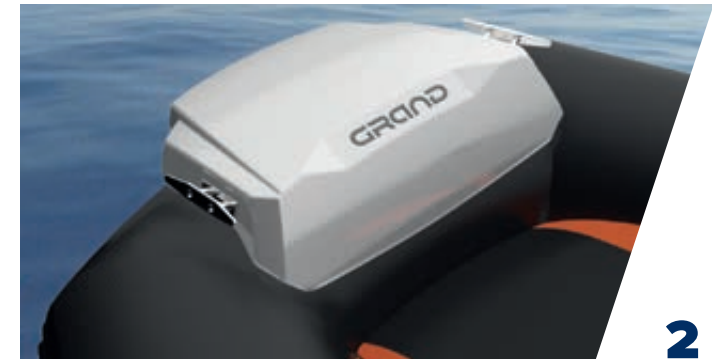
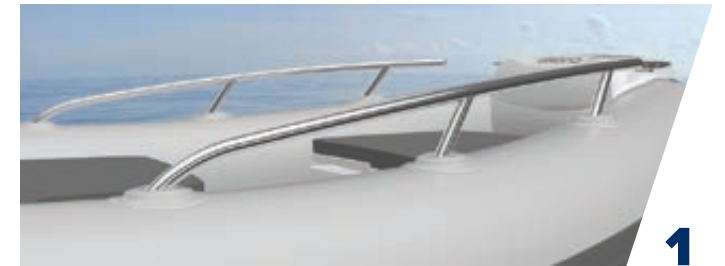


G420GLF

with optional waterski towing mast set and bow handrails

Features:

G420LF — G420GLF



1. Stainless steel bow rails provide important safety feature. **2. New bow step plate** with port and starboard cleats. **3. New ergonomically designed console** will accommodate 9" chart plotter.

The design follows the well-established GRAND contemporary design philosophy with a bright, dynamic appearance and aerodynamic lines.

Stainless steel
waterski towing mast

Fuel system with 55
l tank and sender

Safety handrails

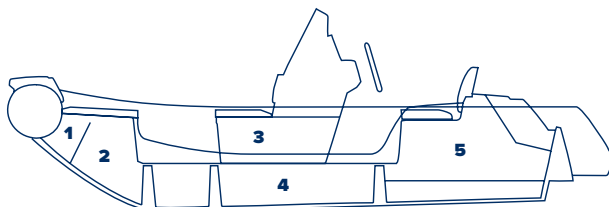
New tube décor



G420



G420LF



COMPARTMENTS CHART

- 1.** Bow anchor storage
- 2.** Bow locker
- 3.** Console storage
- 4.** Fuel tank compartment
- 5.** Rear dry storage

STANDARD FEATURES:

- Deep-V fiberglass hull with transom extensions and bow towing eye
- Inflatable tube with fiberglass step ends
- Bow step plate with two cleats
- Steering console CL-24 with windshield, cup holder and side railings
- Mechanical steering system with steering wheel
- Rear seat cushion and seatback
- Two rear seat handrails, two rear cleats

GRAND LUXE FEATURES:

- Electric package with navigation lights, bilge pump, electric horn, switches, battery switch and complete wiring
- Fuel system with 55l tank and sender

OPTIONAL EQUIPMENT:

- Bow removable sundeck set with cushions
- Stainless steel waterski towing mast
- Stainless steel bow rails
- Bimini top
- Overall cover, console cover
- 2 overpressure valves
- Keel and Tube protection packages
- SILVERTEX upholstery upgrade
- SeaDek antiskid set



G340-G380

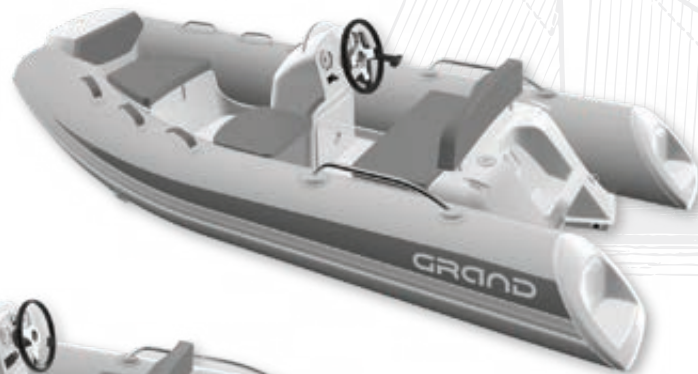
From the outset our **GOLDEN LINE** Tenders have introduced a new age of luxury in RIB design.

With their superior quality, comfort and elegance, this series has become a prestigious and exclusive tender for owners of luxury yachts. There are currently two models: The G340 (330cm or 10'10") and the G380 (360cm or 11'10") both with fiberglass step ends. They come fully equipped with large bow step plate with navigation light, pull up cleat and soft seat back, low profile console with handrail, and two rear handrails.

But perhaps the most important feature is their unbeatably low weight, which enables them to be accommodated by most davit systems.

- **The G340EF** weighs in at 129kg (284 lbs) and with a 20hp outboard around 204kg (450 lbs).
- **The G380EF** weighs in at 170kg (374 lbs) and with a 40hp outboard around 265kg (583 lbs).

G340EF



G380EF



Features:

G380EF — G340EF



1



2



3

1. Elegant transom extensions for a better ride, stability, flotation and easily getting on plane **2. Lightest luxury dinghies ever!** Boat weights: G340 — 129 kg, G380 — 170 kg rear of the steering console. **3. Easy removable side seat** with soft cushion (optional).



Bow step plate with pull-up cleat

Low profile steering console with handrail and front seat

Two rear safety handrails

Every model is equipped with a unique water spray protection system that is designed to provide a dry ride with no water entering from the stern.

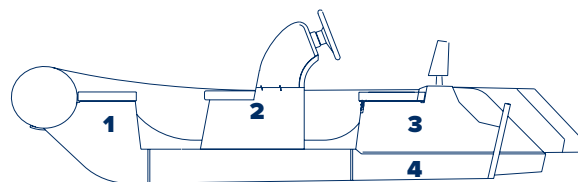
G380



G340



G380EF



COMPARTMENTS CHART

- 1.** Bow locker
- 2.** Console storage compartment
- 3.** Rear dry compartment
- 4.** Rear lower compartment

STANDARD FEATURES:

- Medium "V" hull with extended transom tabs
- Inflatable tube with fiberglass step ends
- Extended bow step plate with pull-up cleat, navigation light and soft bow seat back
- Mechanical steering system with steering wheel
- Low profile steering console with handrail, folding back and front seat (G380EF) with removal cushion
- Molded-in lockable bow stowage with cushion
- Molded-in rear lockable seat with cushion and seat back
- Bow grab handle and onboard safety grab handles
- Two rear safety handrails
- Three towing bow eyes, two front + two rear lifting eyes, two rear cleats
- Tough raised rubbing strake with splash guard
- Cockpit drain system with one-way drain valve

GRAND LUXE FEATURES:

- Electric package with navigation lights, bilge pump, electric horn, switches, battery switch and complete wiring

OPTIONAL EQUIPMENT:

- Removable side seat package
- Built in fuel system with 40 liter tank and sender
- Bimini top
- Overall cover, console cover
- Overpressure valve
- Keel and tube protector packages
- SILVERTEX upholstery upgrade
- SeaDek antiskid set



SILVER LINE

Customers whose primary need is good value and functionality will favor our Silver Line Series. The boats range from 2.5 m to 5.5 m in length. Most models are available with option packages including Base, Sport and Deluxe so we hope you will find exactly what you are looking for in our Silver Line Series.

S550



The SILVER LINE S550 is a GRAND model which will not fail to impress and is fast gaining in popularity.

This long-anticipated model quickly became one of our bestsellers, winning many customers hearts with it's family friendly credentials. Based on a modular design concept this boat is an ideal solution as a family runabout, watersport workhorse, holiday fun boat and much more. It is easy to transport, provides plenty of storage space and cockpit area and demonstrates an incredibly high performance level and stability due to the advanced easily driven Deep "V" High Step Hull.

The S550 now comes with fiberglass step ends and a polyester navigation arch as standard equipment. It is available in two versions:

DELUXE with many standard features, and the **GRAND LUXE** with stainless steel bow and rear handrails, electrics package, plus twin swim platforms with ladder.



S550GRF

with water ski mast

Features:

S550RF — S550GRF



1



2



3

1. Unique High Step Hull design for fast safe and dry ride. **2. New generation steering console** with two panels for instruments and electronics. **3. GRP step ends** with easy access for boarding, swimming and improved ride.

The key points within the design philosophy were to produce a practical, spacious, easy transportable and well-equipped boat at a highly competitive price.

Polyester navigation arch

Bow step plate with anchor roller, two fairleads and pull-up cleat

Large cockpit with plenty of storage, sundeck and unique tube-mounted bow rails

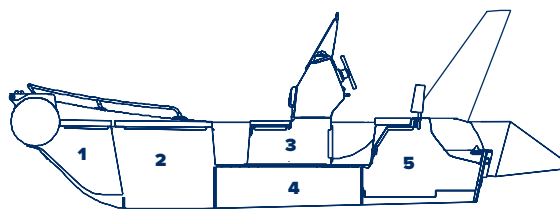
Waterski towing mast



S550



S550RF



COMPARTMENTS CHART

1. Bow locker
2. Large front locker
3. Console storage
4. Fuel tank compartment
5. Rear compartment

STANDARD FEATURES:

- Heavy-duty Deep-V polyester hull
- Inflatable tube with fiberglass step ends
- Bow step plate with anchor roller, two fairleads and pull-up cleat
- Steering console CL-10 with windshield and handrail
- Mechanical steering system with steering wheel
- Molded in bow locker with access cover and soft cushion
- Rear locker with access panel, soft seat and seat back
- Front storage locker with hatch, lifters and cushion
- Bow towing eye and four lifting eyes
- Two rear pull up stainless steel cleats
- Built in 90 liter fuel tank with sender and filler
- Main deck access cover with inspection hatch
- Polyester navigation arch+

GRAND LUXE FEATURES:

- Two swim platforms with ladder
- Stainless steel bow rails and two stern handrails
- Complete electric package

OPTIONAL EQUIPMENT:

- Removable bow sundeck with cushions
- Waterski towing mast
- Water shower set with 50-lit tank, pump, shower
- Hydraulic steering system with steering wheel
- Bimini-top
- Overall cover, console cover
- Overpressure valve
- Keel and tube protector packages
- SILVERTEX upholstery upgrade
- SeaDek antiskid set

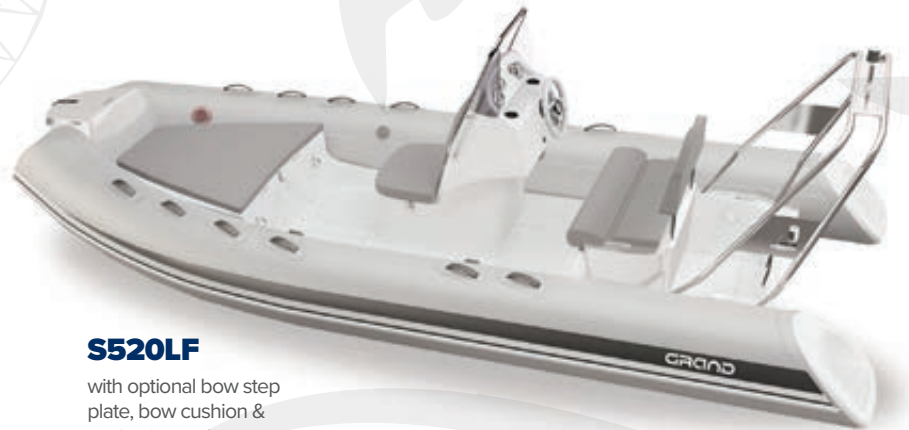
S520



The Silver Line S520 is one of the latest mid-size designs from GRAND, which from its inception has become a most popular family and holiday boat.

The key points within the design philosophy were to produce a practical, spacious, easy transportable and well-equipped boat at a highly competitive price. The Extra-Deep “V” hull (over 25° on transom and over 50° max) ensures the boat copes easily with choppy inland and coastal waters. If you are looking for a safe, reliable, roomy and easy transportable RIB for your family holiday, look no further — the S520 is exactly what you need! The S520 is available in three versions:

- **The BASE version (S520)** — boat with bare cockpit suitable for customization.
- **The SPORT version (S520S)** — boat with (CS-03) SPORT console with windshield, handrail and steering system.
- **The DELUXE version (S520L)** — boat which includes the new (CL-12) DELUXE steering console with windshield, handrail, front seat and seatback with stowage compartment plus a rear (SD-15) double seat, soft back with lockable stowage compartment.



S520LF

with optional bow step plate, bow cushion & navigation arch

Features:

S520 — S520S — S520L



1. New large and convenient bow step plate. 2. High capacity bow locker with over 200 liters capacity transforms to comfortable sundeck. **3. New steering double seat** with flip-up system for your comfortable ride.

The Silver Line S520 is one of the latest mid-size designs from GRAND, which from its inception has become a most popular family and holiday boat.



Soft curved multi-chamber inflatable tube

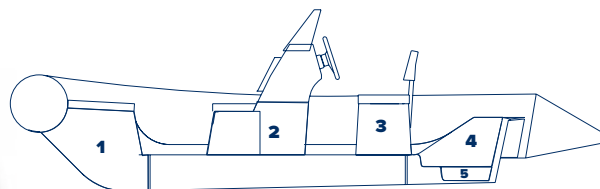
Steering console with front seat, seat back, windshield, handrail and two dashboards

Extra-Deep "V" molded fiberglass hull with self-bailing cockpit, fuel tank compartment and access cover

S520



S520L



COMPARTMENTS CHART

- 1.** Bow locker
- 2.** Console storage
- 3.** Double seat locker
- 4.** Rear open storage volume
- 5.** Water collector

STANDARD FEATURES:

- Extra-Deep “V” molded fiberglass hull with self-bailing cockpit, fuel tank compartment and access cover
- Soft curved multi-chamber inflatable tube
- Molded in high capacity (200 liter) bow locker with access cover
- Two rear cleats (excl. BASE)
- Towing bow eye, two front and two rear lifting eyes
- Bow grab handle, safety grab handles
- Tough raised rubbing strake with splash guard
- Two paddles and high-efficiency foot pump
- Two cockpit bailers and hull drain plug

DELUXE VERSION:

- CL-12 steering console with front seat, seat back, windshield, handrail and two dashboards
- Mechanical steering system with steering wheel
- Rear double seat SD-15 with soft seat backs and lockable stowage

SPORT VERSION:

- CS-03 steering console with windshield and handrail
- Steering system with cable and steering wheel

OPTIONAL EQUIPMENT:

- Removable sundeck
- Built in 90 liter fuel tank with sender and filler
- Complete electric package
- Fiberglass step ends for inflatable tube
- Stainless steel polished navigation arch
- Bow step plate with clam bollard
- Bow locker removable cushion
- Collapsible bimini top
- Overall cover, console cover
- Overpressure valve
- Keel and tube protector packages
- SILVERTEX upholstery upgrade
- SeaDek antiskid set (for DELUXE version)

S470N



This Silver Line S470N is a new model replacing our previous S470 bestseller.

The new model retains the original Silver Line philosophy of a practical, spacious and lightweight concept with elegant design but now incorporates the unique GRAND DART hull system with key features:

- **A higher keel line** with a deeper “V” for a softer ride
- **Additional space** at the forward end of the cockpit
- **Reduced water spray** for a drier ride at speed

The S470N is available in three versions:

- **The BASE version (S470N)** — boat with bare cockpit suitable for customization.
- **The SPORT version (S470NS)** — boat with (CS-03) SPORT console, double jockey seat and steering system.
- **The DELUXE version (S470NL)** — boat with new (CL-14) steering console with windshield, handrail and front seat, plus a new stylish (SD-10) double seat.



S470NSF

Features:

S470N — S470NS — S470NL



1. Unique “DART hull” performance system with superior stability and dry ride. **2. Elegant and slick bow step plate** with anchor roller and cleat (optional). **3. New folding stainless steel navigation arch** for compact storage and the occasional low bridge.

We have also included a new generation steering console with double seat for a more comfortable ride plus additional storage space.



Bow step plate with anchor roller and cleat

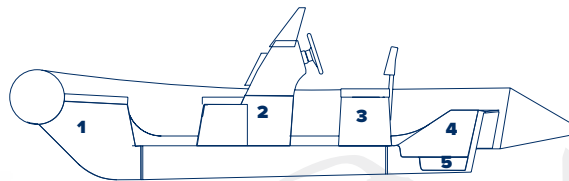
Fiberglass step ends



S470N



S470NL



COMPARTMENTS CHART

- 1.** Bow locker
- 2.** Console storage
- 3.** Double seat locker
- 4.** Rear open storage volume
- 5.** Drain well

STANDARD FEATURES:

- Deep-V hull with original “DART-hull” system
- Soft curved multi-chamber inflatable tube
- Molded in spacious bow locker with access cover
- Towing bow eye, two front and two rear lifting eyes
- Bow grab handle, safety grab handles
- Tough raised rubbing strake with splash guard
- Cockpit drain plug (bailer) and hull drain plug

DELUXE VERSION:

- Steering console CL-14 with windshield, handrail
- Mechanical steering system with steering wheel
- Rear double seat SD-10 with seat back and stowage
- Bow locker removable cushion

SPORT VERSION:

- Steering console CS-03 with windshield and handrail
- Mechanical steering system with steering wheel

OPTIONAL EQUIPMENT:

- Removable sundeck for S470NL
- Complete electric package
- Fiberglass step ends of the inflatable tube
- Stainless steel folding navigation arch
- Bow step plate with anchor roller and cleat
- Bow locker removable cushion (S470N and S470NS)
- Collapsible bimini top
- Overall cover, console cover
- Overpressure valve
- Keel and tube protector packages
- SILVERTEX upholstery upgrade
- SeaDek antiskid set (for DELUXE version)

S370N-S420N



Both models are based on the DART hull system with the following key features include:

- **Exceptional stability** with softer ride and improved performance.
- **Impressive cockpit** with wider bow section, more seating and storage.
- **Extremely lightweight hull** made of hand-laid high density GRP.
- **Competitively priced** for great value!

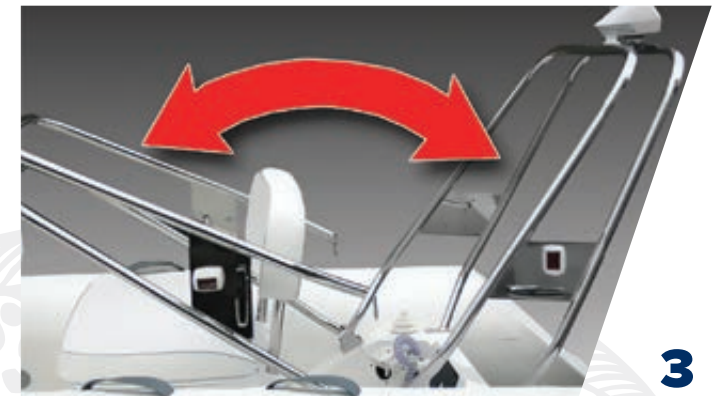
The two models comprise the 370 cm (12' 2") and 420 cm (13' 9") with three versions available for each:

- **The BASE version** (S370N, S420N) — boat with 2 wooden seats and oars.
- **The SPORT version** (S370NS, S420NS) — with (CS-01) SPORT console for the S370N, and a new (CS-03) console for the S420N.
- **The DELUXE version** (S370NL, S420NL) — with a new (CL-11) DELUXE steering console and rear (SD-06) double seat with soft back and securable locker.



Features:

S370N — S420N



1. New generation of fast performing hulls with **unique DART hull system** from GRAND. **2.** **Practical and stylish steering console** for an enjoyable ride and easy control. **3.** **New folding stainless steel navigation arch** for compact storage and the occasional low bridge.

The S370N and S420N both represent a contemporary approach to the design of mid sized RIBs

Bow step plate with anchor roller and cleat

Bow locker removable cushion

Steering console with windshield and handrail

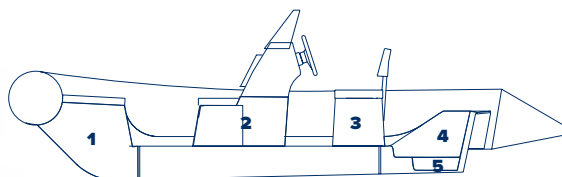
S420N



S420N



S420NL



COMPARTMENTS CHART

- 1.** Bow locker
- 2.** Console storage
- 3.** Double seat locker
- 4.** Rear open storage volume
- 5.** Drain well

STANDARD FEATURES:

- Medium “V” double shell fiberglass hull with DART performance system and antiskid surface
- Soft curved multi-chamber inflatable tube
- Molded in large bow locker with access cover
- Two wooden seats (BASE only)
- Two paddles (SPORT, DELUXE), two oars + oarlocks (BASE)
- Towing bow eye, two front and two rear lifting eyes
- Bow grab handle and safety grab handles
- Doubled draining system with two plugs and bailer
- Tough raised rubbing strake with splash guard

SPORT VERSION:

- Steering console CS-01W (S370N)
- Steering console CS-03 with windshield and handrail (S420N)
- Mechanical steering system with steering wheel

DELUXE VERSION:

- CL-11 steering console with windshield, st steel railing
- Mechanical steering system with steering wheel

- SD-06 double seat with soft seat, seat back and stowage
- Bow locker removable cushion

OPTIONAL EQUIPMENT:

- Removable sundeck with soft cushion (S420NL)
- Complete electric package
- Fiberglass step ends for inflatable tube
- Folding stainless steel navigation arch
- Removable seat cushions with bag for S370N
- Bow locker removable cushion (BASE and SPORT)
- Bow step plate with anchor roller and cleat
- Collapsible bimini top
- Overall cover, console cover
- Overpressure valve
- Keel and tube protector packages
- SILVERTEX upholstery upgrade
- SeaDek antiskid set (for DELUXE version)

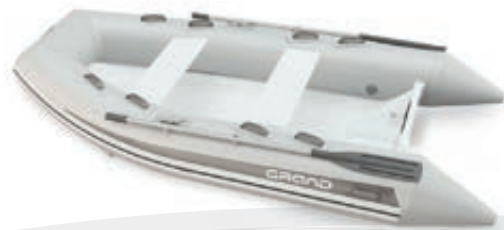


S250—S330

Our SILVER LINE Tenders combine a traditional RIB design with our original styling.

SILVER LINE Tenders are produced in four sizes; 250 cm (8'2"), 275 cm (9'0"), 300 cm (10'10") and 330 cm (10'11") and are available in the following versions:

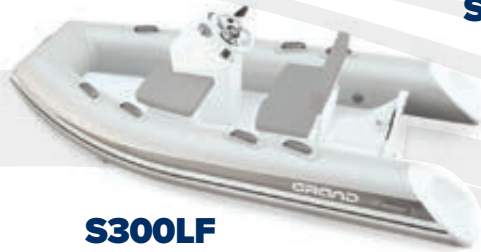
- **The Base version** — a True Classic. It is a conventional tender featuring two removable wooden seats and oars, along with several other features and optional equipment. Take it out for lunch on the beach or perhaps a short trip to the mainland for supplies.
- **The Sport version** — treat the kids or yourselves. This version comes with GRAND's SPORT console featuring a complete steering system (except S250 and S275) and with the ideal power options; up to 25hp on the 330, to qualify it as a potent and exciting high-speed watercraft. It's for boaters who value fun and great handling!
- **The Deluxe version** — just what your luxury yacht needs! This boat includes the new Deluxe (CL-17) console with a complete steering system (except S250 and S275) and wide (SD-12) double seat with soft back and securable locker.



**S300
BASE**



**S300S
SPORT**



**S300LF
DELUXE**

with optional console seat
and GRP step plates

Features:

S250 — S275 — S300 — S330



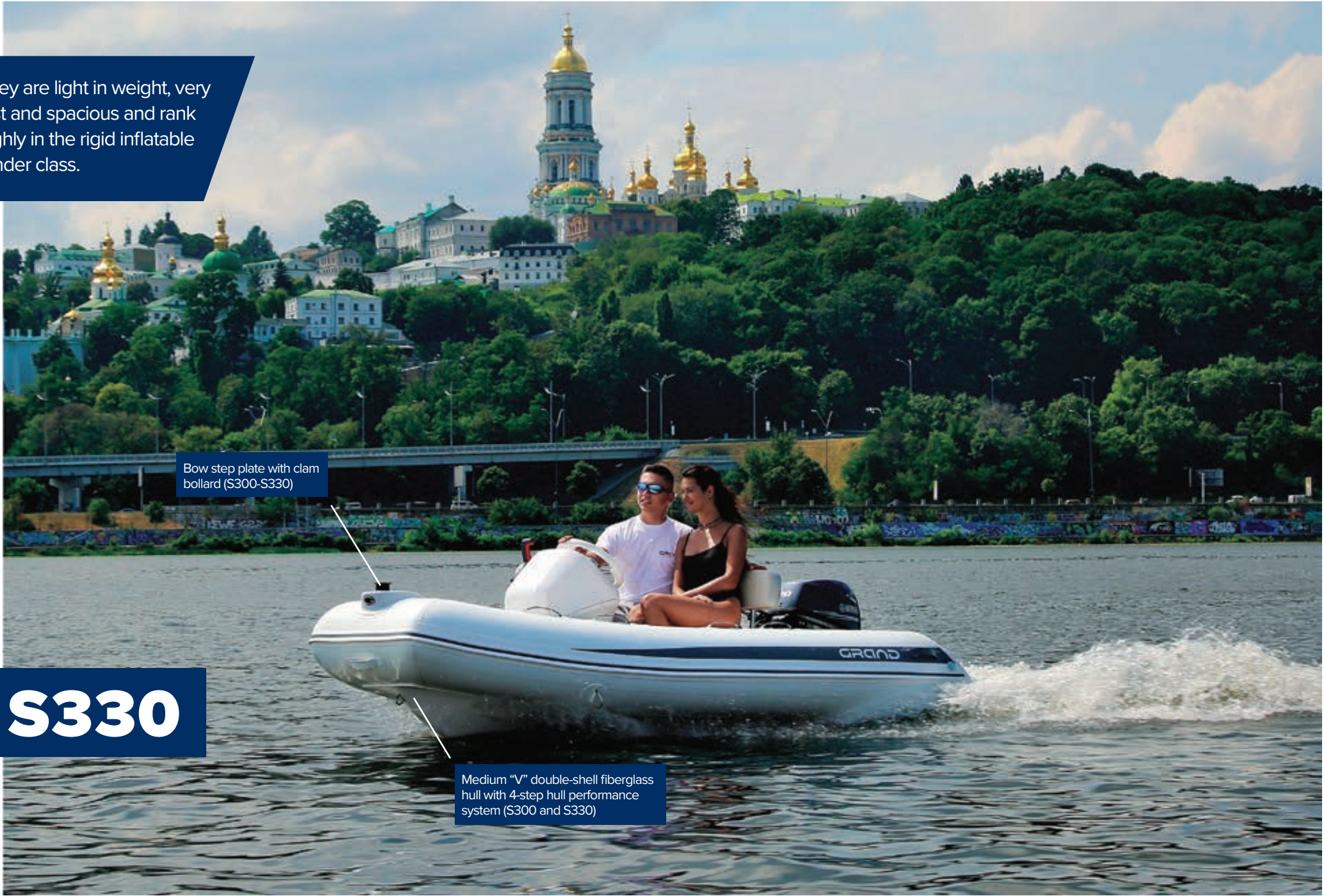
1. Unbeatable performance. Possibly the fastest RIB dinghies on the market. **2. Lowered tube ends** for outstanding stability and an exceptionally dry ride? **3. Impressive carrying capacity** with lots of cockpit space for your crew and staff.

They are light in weight, very fast and spacious and rank highly in the rigid inflatable tender class.

Bow step plate with clam bollard (S300-S330)

S330

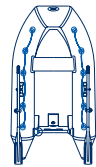
Medium "V" double-shell fiberglass hull with 4-step hull performance system (S300 and S330)



S300

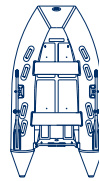


S300L



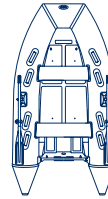
S250

250 (8' 2")
6HP, 2 pers



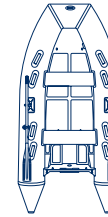
S275

275 (9' 0")
10HP, 3 pers



S300

300 (9' 10")
15HP, 4 pers



S330

330 (10' 10")
20HP, 4 pers

STANDARD FEATURES:

- Medium "V" double-shell fiberglass hull
- 4-step hull performance system (S300 and S330)
- Soft curved multi-chamber inflatable tube
- Two removable wooden seats (one seat on S250)
- Two oarlocks with two oars and oar posts
- Two front and two rear st. steel lifting eyes
- Three towing bow eyes
- Bow grab handle and two rear handles (S300, S330)
- Flat antiskid deck surface
- Cockpit drain plug (bailer) and hull drain plug
- Tough raised rubbing strake with splash guard
- Safety grab handles (lifeline for S250)

SPORT VERSION:

- Steering console CS-01
- Mechanical steering system with steering wheel

DELUXE VERSION:

- CL-17 steering console
- Mechanical steering system with steering wheel
- SD-12 double seat with soft seat, seat back and stowage

OPTIONAL EQUIPMENT:

- Additional console seat (S300L, S330L)
- Fiberglass step ends for inflatable tube (except S250)
- Bow stowage bag
- Soft seat cushions with under-seat bag
- Bow step plate with clam bollard (S300-S330)
- Bimini Top (S300-S330)
- Overall cover, console cover
- Overpressure valve
- Keel and tube protector packages
- SILVERTEX upholstery upgrade
- SeaDek antiskid set (for DELUXE version)

NEW SERIES!



ALUMINUM LINE

Our Aluminum Line Tenders combine a degree of robustness with a traditional RIB design. The result is a high strength hull, which together with our unique styling produces an elegant, spacious and reliable boat. The Series includes boats from 2.7 m to 3.3 m in length.





ALU270D- ALU330D

As with all GRAND's products, our ALUMINUM LINE boats are designed and built to provide optimum pleasure and a feeling of Luxury, Comfort and Safety no matter where your journey takes you!

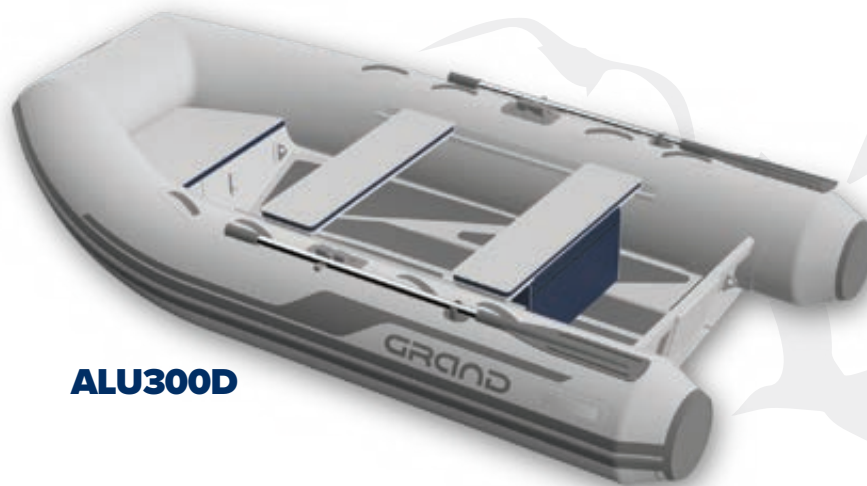
Hulls are made of 3mm 5083/H111 Aluminum alloy, which known for its exceptional performance in extreme environments. This alloy is highly resistant to attack by both seawater and industrial chemicals, it also retains exceptional strength after welding and has the highest strength of all the non-heat treatable aluminum alloys. In addition the hull and all aluminum components are painted, affording additional protection.

Hull and tubes are also available in a range of colors to match your yacht.

The design criteria was performance, practicality and safety and the result is a durable and seaworthy design that professionals will choose for year round use in most locations.

We are sure you'll be impressed with the outstanding performance of our new ALUMINUM LINE boats, whether you are looking for a yacht tender, professional work boat or simply looking for a comfortable boat for recreational purposes.

The ALUMINUM LINE is available in 2700, 3000 and 3300 mm lengths.



ALU300D

Features:

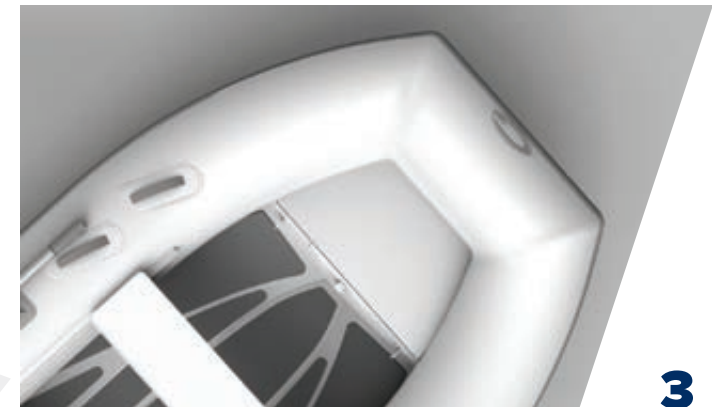
ALU270D — ALU300D — ALU330D



1



2



3

1. Durable and lightweight hull made from 3mm 5083 / H111 Aluminum alloy. **2. Original tube ends** emphasize the elegant overall appearance of the tender. **3. Spacious bow section** significantly increases the total area of the cockpit.

Hulls are made of 3mm 5083/H111 Aluminum alloy, which known for its exceptional performance in extreme environments.



Two removable wooden seats with sliding system

Bow compartment

Double deck with anti-slip surface

ALU300D



ALU330D



ALU300D



ALU270D

STANDARD FEATURES:

- Medium-V double deck aluminum hull
- Soft curved multi-chamber inflatable tube
- Antiskid deck surface
- Bow compartment
- Bow seat cushion
- Two removable wooden seats with sliding system
- Oars with oarlocks
- Cockpit drain plug (bailer)
- Tough raised rubbing strake with splash guard
- Safety grab handles

OPTIONAL EQUIPMENT:

- Overall cover
- Seat cushion with underseat bag
- Overpressure valve
- PVC tube protector

Technical Data Specification

SERIES		GOLDEN LINE									SILVER LINE				
Models		G850L	G650LF	G580LF	G500LF	G480LF	G480EF	G420LF	G380EF	G340EF	S550RF	S520/ S520S	S520L	S470N/ S470NS	S470NL
Length overall	cm	850	650	585	495	455	455	420	360	330	540	520	520	470	470
	inches	27' 11"	21' 4"	19' 2"	16' 3"	14' 11"	14' 11"	13' 9"	11' 10"	10' 10"	17' 9"	17' 1"	17' 1"	15' 5"	15' 5"
Length internal	cm	640	440	427	332	340	340	290	270	240	415	385	385	340	340
	inches	21' 0"	14' 5"	14' 0"	10' 11"	11' 2"	11' 2"	9' 6"	8' 10"	7' 10"	13' 7"	12' 8"	12' 8"	11' 2"	11' 2"
Width overall	cm	295	265	245	230	210	210	200	186	176	255	220	220	205	205
	inches	9' 8"	8' 8"	8' 0"	7' 7"	6' 11"	6' 11"	6' 7"	6' 1"	5' 9"	8' 4"	7' 3"	7' 3"	6' 9"	6' 9"
Width internal	cm	175	150	145	128	105	105	105	88	80	145	115	115	100	100
	inches	5' 9"	4' 11"	4' 9"	4' 2"	3' 5"	3' 5"	3' 5"	2' 11"	2' 7"	4' 9"	3' 9"	3' 9"	3' 3"	3' 3"
Tube diameter	cm	60	55	50	50	50	50	48	46	43	55	50	50	50	50
	inches	24"	22"	20"	20"	20"	20"	19"	18"	17"	22"	20"	20"	20"	20"
Bare Boat weight*	kg	1200	750	535	435	250	234	255	170	129	440	225 / 255	285	170 / 200	208
	lbs	2640	1650	1177	957	550	515	561	374	284	968	495 / 561	627	374 / 440	458
Transport gross weight **	kg	2080	860	650	550	325	317	330	235	195	540	320	350	226 / 256	265
	lbs	4576	1892	1430	1210	715	697	726	517	429	1188	627 / 704	770	497 / 563	583
Loading capacity ***	kg	2000	1400	1200	1000	900	900	800	650	580	1200	1000	1000	900	900
	lbs	4400	3080	2640	2200	1980	1980	1760	1430	1276	2640	2200	2200	1980	1980
Passenger capacity		12	12	12	10	6	6	6	5	4	10	9	9	8	8
N° of chambers		5	5	5	5	5	5	4	3	3	5	5	5	5	5
Engine recommended	HP	300	150	130	90	50	50	40	30	20	115	70	70	50	50
	KW	220,6	110,3	95,6	66,2	36,8	36,8	29,4	22,1	14,7	84,6	51,5	51,5	36,8	36,8
Engine max***	HP	400	200	150	115	75	75	60	40	30	120	100	100	70	70
	KW	294,2	147,1	110,3	84,6	55,2	55,2	44,1	29,4	22,1	88,3	73,5	73,5	51,5	51,5
Engine weight max	kg	480	300	240	210	175	175	120	95	70	240	175	175	150	150
	lbs	1056	660	528	462	385	385	264	209	154	528	385	385	330	330
Engine shaft length	inches	30" (Ultralong)	20" (long)	20" (long)	20" (long)	20" (long)	20" (long)	20" (long)	20" (long)	15" (short)	20" (long)	20" (long)	20" (long)	20" (long)	20" (long)
Midsection / aft deadrise	degrees	30° / 25°	25° / 20°	20° / 17°	21° / 18°	20° / 17°	20° / 17°	20° / 17°	17° / 15°	17° / 14°	23° / 18°	20° / 15°	20° / 15°	20° / 15°	20° / 15°
Stowed dimensions of package N°1	cm	850 / 260 / 230	640 / 230 / 140	578 / 225 / 117	502 / 220 / 101	433 / 166 / 94	433 / 166 / 94	400 / 165 / 115	350 / 158 / 88	320 / 140 / 82	530 / 210 / 118	450 / 170 / 70	450 / 170 / 70	400 / 170 / 78	400 / 170 / 78
	inches	27' 11" / 8' 6" / 7' 7"	21' 0" / 7' 7" / 4' 7"	19' 0" / 7' 5" / 3' 10"	16' 6" / 7' 3" / 3' 4"	14' 2" / 5' 5" / 3' 1"	14' 2" / 5' 5" / 3' 1"	13' 1" / 5' 5" / 3' 9"	11' 6" / 5' 2" / 2' 11"	10' 6" / 4' 7" / 2' 8"	17' 5" / 6' 11" / 3' 10"	14' 9" / 5' 7" / 2' 4"	13' 1" / 5' 7" / 2' 7"	13' 1" / 5' 7" / 2' 7"	13' 1" / 5' 7" / 2' 7"
Stowed dimensions of package N°2	cm		127 / 121 / 110	143 / 112 / 125	120 / 91,5 / 113	65 / 60 / 60	65 / 60 / 60	110 / 88 / 108	83 / 51 / 86	49 / 49 / 80	122 / 110 / 90	155 / 90 / 51	108 / 114 / 72	155 / 90 / 51	94 / 73 / 54
	inches		4' 2" / 4' 0" / 3' 7"	4' 8" / 3' 8" / 4' 1"	3' 11" / 3' 0" / 3' 8"	2' 2" / 2' 0" / 2' 0"	2' 2" / 2' 0" / 2' 0"	3' 7" / 2' 11" / 3' 7"	2' 9" / 1' 8" / 2' 10"	1' 7" / 1' 7" / 2' 7"	4' 0" / 3' 7" / 2' 11"	5' 1" / 2' 11" / 1' 8"	3' 7" / 3' 9" / 2' 4"	5' 1" / 2' 11" / 1' 8"	3' 1" / 2' 5" / 1' 9"
Stowed dimensions of package N°3	cm		100 / 109 / 70	105 / 62 / 91							90 / 90 / 90	114 / 84 / 58		114 / 84 / 58	
	inches		3' 3" / 3' 7" / 2' 4"	3' 5" / 2' 0" / 3' 0"							2' 11" / 2' 11" / 2' 11"	3' 9" / 2' 9" / 1' 11"		3' 9" / 2' 9" / 1' 11"	
Tube Material		Hypalon	PVC / Hypalon	PVC / Hypalon	PVC / Hypalon	PVC / Hypalon	PVC / Hypalon	PVC / Hypalon	PVC / Hypalon	PVC / Hypalon	PVC / Hypalon	PVC / Hypalon	PVC / Hypalon	PVC / Hypalon	PVC / Hypalon
Boat design category*****		B	D,C	D,C	D,C	D,C	D,C	D,C	D,C	D,C	D,C	D,C	D,C	D,C	B
Tube colors		W, L-G, B	W, L-G, B	W, L-G, R, B	W, L-G, R, B	W, L-G, R, B	W, L-G, R, B	W, L-G, R, B	W, L-G, R, B	W, L-G, R, B	W, L-G, B	W, L-G, R, B	W, L-G, B	W, L-G, B	W, L-G, B
GRP colors****		W, D-G, L-G, B	W, D-G, L-G, B	W, D-G, L-G, B	W, D-G, L-G, B	W, D-G, L-G, B	W, D-G, L-G, B	W, D-G, L-G, B	W, D-G, L-G, B	W, D-G, L-G, B	W, D-G, L-G, B	W, D-G, L-G, B	W, D-G, L-G, B	W, D-G, L-G, B	W, D-G, L-G, B
Upholstery colors		W, L-G, R, 2 IN 1*, B	W, L-G, R, 2 IN 1*, B	W, L-G, R, 2 IN 1*, B	W, L-G, R, 2 IN 1*, B	W, L-G, R, 2 IN 1*, B	W, L-G, R, 2 IN 1*, B	W, L-G, R, 2 IN 1*, B	W, L-G, R, 2 IN 1*, B	W, L-G, R, 2 IN 1*, B	W, L-G, R, B	W, L-G, R, B	W, L-G, R, B	W, L-G, R, B	W, L-G, R, 2 IN 1*, B

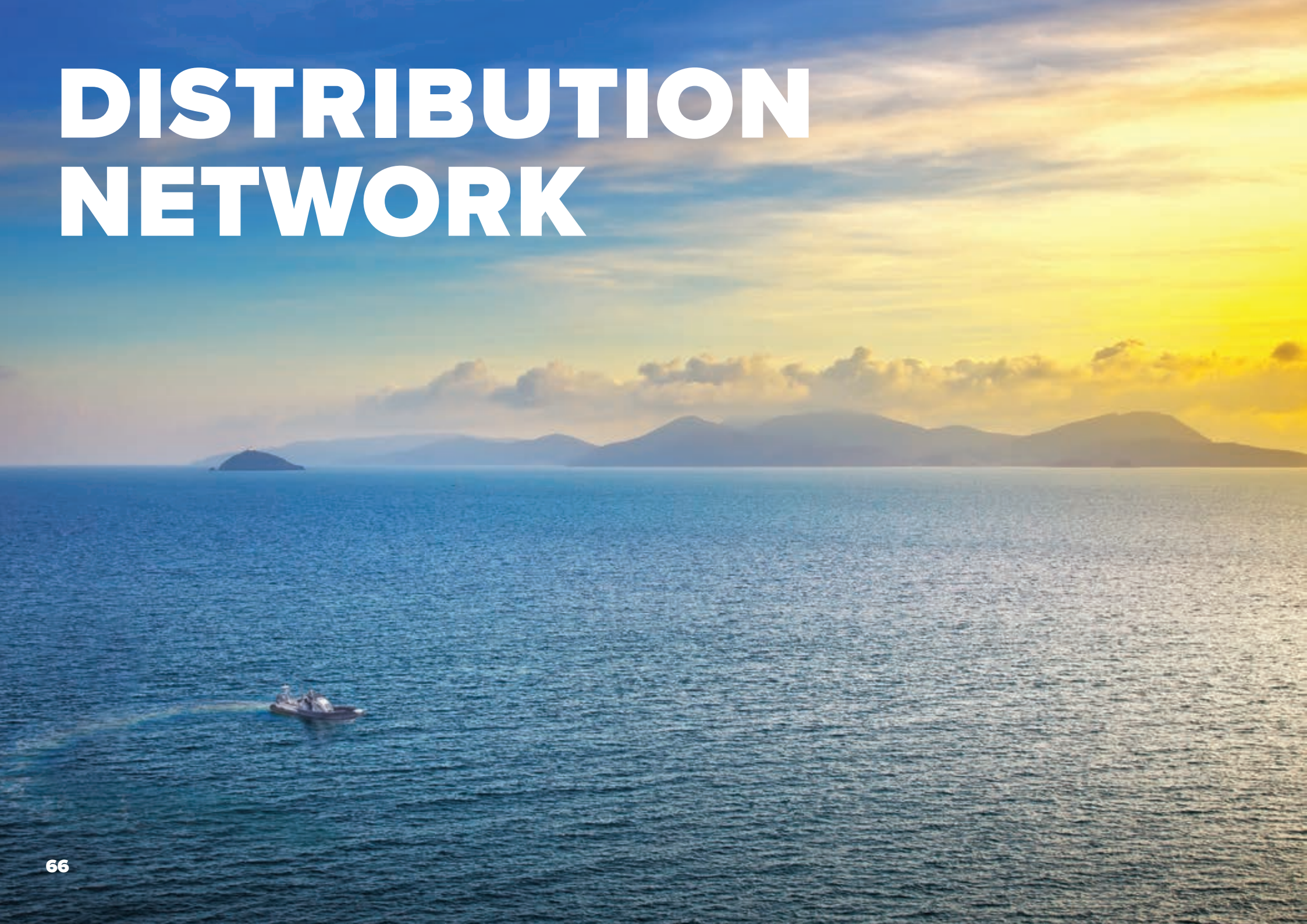
Colors:  W — white  L-G — Light Gray  R — Red  D-G — Dark Gray  B — Black * Other upholstery color combinations are available on request

SILVER LINE										ALUMINUM LINE			SERIES	
S420N/ S420NS	S420NL	S370N/ S370NS	S370NL	S330/ S330S	S330L	S300/S300S	S300L	S275	S250	ALU330D	ALU300D	ALU270D	Models	
420	420	370	370	330	330	300	300	275	250	330	300	270	cm	Length overall
13' 9"	13' 9"	12' 2"	12' 2"	10' 10"	10' 10"	9' 10"	9' 10"	9' 0"	8' 2"	10' 10"	9' 10"	8' 10"	inches	
310	310	270	270	218	218	200	200	182	166	263	226	199	cm	Length internal
10' 2"	10' 2"	8' 10"	8' 10"	7' 2"	7' 2"	6' 7"	6' 7"	6' 0"	5' 5"	8' 8"	7' 5"	6' 6"	inches	
195	195	185	185	169	169	167	167	155	146	168	168	158	cm	Width overall
6' 5"	6' 5"	6' 1"	6' 1"	5' 7"	5' 7"	5' 6"	5' 6"	5' 1"	4' 9"	5' 6"	5' 6"	5' 2"	inches	
101	101	92	92	78	78	78	78	70	62	84	84	78	cm	Width internal
3' 4"	3' 4"	3' 0"	3' 0"	2' 7"	2' 7"	2' 7"	2' 7"	2' 4"	2' 0"	2' 9"	2' 9"	2' 7"	inches	
46	46	46	46	43	43	43	43	40	38	42	42	40	cm	Tube diameter
18"	18"	18"	18"	17"	17"	17"	17"	16"	15"	17"	17"	16"	inches	
115 / 145	145	95 / 120	124	63/84	84,9	56/77	77,4	53	46	66	61	52	kg	Bare Boat weight*
253/319	319	209 / 265	273	139/185	187	123/169	170	117	101	146	135	115	lbs	
178 / 209	210	158 / 184	185	99/119	126,4	91/112	118,5	87	72	68	65	63	kg	Transport gross weight **
392/460	462	347 / 405	407	218/262	278	200/246	261	191	158	150	143	139	lbs	
700	700	600	600	580	580	520	520	440	330	580	520	440	kg	Loading capacity ***
1540	1540	1320	1320	1276	1276	1144	1144	968	726	1279	1146	970	lbs	
6	6	5	5	4	4	4	4	3	2	4	4	3		Passenger capacity N° of chambers
3	3	3	3	3	3	3	3	3	3	3	3	3		
40	40	25	25	15	20	10	15	6	3	20	15	6	HP	Engine recommended
29,4	29,4	18,4	18,4	11	14,7	7,4	11	4,4	2,2	14,7	11	4,4	KW	
50	50	30	30	25	25	15	15	10	6	25	15	10	HP	Engine max***
36,8	36,8	22,1	22,1	18,4	18,4	11	11	7,4	4,4	18,4	11	7,4	KW	
115	115	98	98	60	60	50	50	45	35	70	50	45	kg	Engine weight max
253	253	215	215	132	132	110	110	99	77	154	110	99	lbs	
15", 20"	15", 20"	15" (short)	15" (short)	15" (short)	15" (short)	15" (short)	15" (short)	15" (short)	15" (short)	15" (short)	15" (short)	15" (short)	inches	Engine shaft length
20° / 17°	20° / 17°	20° / 17°	20° / 17°	19° / 15°	19° / 15°	19° / 15°	19° / 15°	17° / 15°	17° / 15°	19° / 15°	19° / 15°	17° / 15°	degrees	
350 / 145 / 77	350 / 145 / 77	305 / 153 / 71	305 / 153 / 71	265 / 115 / 57	265 / 115 / 57	253 / 115 / 57	253 / 115 / 57	225 / 114 / 46	208 / 114 / 46	300 / 110 / 50	270 / 110 / 50	240 / 104 / 46	cm	Stowed dimensions of package N°1
11' 6" / 4' 9" / 2' 6"	11' 6" / 4' 9" / 2' 6"	10' 0" / 5' 0" / 2' 4"	10' 0" / 5' 0" / 2' 4"	8' 8" / 3' 9" / 1' 10"	8' 8" / 3' 9" / 1' 10"	8' 4" / 3' 9" / 1' 10"	8' 4" / 3' 9" / 1' 10"	7' 5" / 3' 9" / 1' 6"	6' 10" / 3' 9" / 1' 6"	9' 10" / 3' 7" / 1' 8"	8' 10" / 3' 7" / 1' 8"	7' 10" / 3' 5" / 1' 6"	inches	
155 / 90 / 51	83 / 86 / 51	83 / 86 / 51	83 / 86 / 51	130 / 70 / 43	50 / 45 / 77	130 / 70 / 43	50 / 45 / 77						cm	Stowed dimensions of package N°2
5' 1" / 2' 11" / 1' 8"	2' 9" / 2' 10" / 1' 8"	2' 9" / 2' 10" / 1' 8"	2' 9" / 2' 10" / 1' 8"	4' 3" / 2' 4" / 1' 5"	1' 8" / 1' 6" / 2' 6"	4' 3" / 2' 4" / 1' 5"	1' 8" / 1' 6" / 2' 6"						inches	
	114 / 84 / 58	114 / 84 / 58	114 / 84 / 58		50 / 70 / 71		50 / 70 / 71						cm	Stowed dimensions of package N°3
	3' 9" / 2' 9" / 1' 11"	3' 9" / 2' 9" / 1' 11"	3' 9" / 2' 9" / 1' 11"		1' 8" / 2' 4" / 2' 4"		1' 8" / 2' 4" / 2' 4"						inches	
PVC / Hypalon	PVC / Hypalon	PVC / Hypalon	PVC / Hypalon	PVC / Hypalon	PVC / Hypalon	PVC / Hypalon	PVC / Hypalon	PVC / Hypalon	PVC / Hypalon	PVC / Hypalon	PVC / Hypalon	PVC / Hypalon		Tube Material
D,C	D,C	D,C	D,C	D,C	D,C	D,C	D,C	D	D					Boat design category****
W, L-G, B	W, L-G, B	W, L-G, B	W, L-G, B	W, L-G, B	W, L-G, B	W, L-G, B	W, L-G, B	W, L-G, B	W, L-G, B	W, L-G, B	W, L-G, B	W, L-G, B		
W, D-G, L-G, B	W, D-G, L-G, B	W, D-G, L-G, B	W, D-G, L-G, B	W, D-G, L-G, B	W, D-G, L-G, B	W, D-G, L-G, B	W, D-G, L-G, B	W, D/G, L-G	W, D/G, L-G, B	W, L-G	W, L-G	W, L-G		GRP colors*****
W, L-G,R, B	W, L-G, R, B	W, L-G,R, B	W, L-G, R, B	W, L-G, R, B	W, L-G, R, B	W, L-G,R, B	W, L-G, R, B	W, L-G, R, B	W, L-G,R, B	W, L-G	W, L-G	W, L-G		Upholstery colors

Remarks: * The bare boat weight is just a weight of the empty boat without any removable accessories.
 ** The transport weight is the weight of the complete boat in standard package.
 *** Because of differences of local boatbuilding standards The Loading Capacity and Maximum Engine Power may vary by country. Please check that with your local GRAND representatives/Dealers.
 **** Boat design Category under European Union Directive 2013 /53/ EU.
 ***** Boats from Aluminum Line have hulls made from aluminum.

All the technical data are subject to change without notice. The products trim may be changed from the originally specified. All the dimensions are + or - 3%. All the weights are + or - 10%. Products availability, trim and specifications may vary by country. Please contact your local Dealer / Distributor for update information. The pictures in the catalogue were taken with the professional operators in strictly controlled conditions. Please never try any activity, which is beyond your capabilities, nor which is potentially dangerous. Always wear appropriate and approved life vest or other personal flotation devices and appropriate clothing. Follow the User's manual instructions for the boat and the engine. Make sure that you read and clearly understand all the restrictions and limitations. HAVE A SAFE BOATING!

DISTRIBUTION NETWORK



AUSTRALIA

MARINE RILEY
Tel: +61 2 9979 7000
Mob: +61 418 250 727
38b/6 Jubilee Avenue,
Warriewood, 2102
mark@marineriley.com.au

CANADA / USA

GRAND MARINE
INTERNATIONAL Inc.
176 Rivermede Rd., Unit 2,
Concord, Ontario, L4K3M7,
CANADA
Tel: +1-905-7608519
Fax: +1-905-7608719
mail@grandboats.ca
www.grandinflatableboats.com

CZECH REP / SLOVAKIA

AVAR-YACHT s.ro.
Za Rekou 815, VeverskaBityska,
Brno-venkey 66471, Czech Rep.
Tel: +420 546 428 015
yacht@avaryacht.cz

DENMARK

SALLDIRECT APS
Essen 46, Kolding
6000 Denmark
Tel: +45 40860882
info@saildirect.dk
www.saildirect.dk

ESTONIA

BALTIC SEAL OU
PUNAME 6 (stock 16)
Tallin, 13619, Estonia
Tel: +372 53 408 542
rt@balticseal.ee
www.grandboats.ee

FINLAND

MC SEA OY
Martinsillantie 24,
02300, Espoo, Finland
Tel +358 9 809 4446
mcsea@mcsea.fi

FRANCE

GROUPE YB NAUTISME
20 boulevard Gabriel
Lippmann
29 850 GOUESNOU
Tel: +33 0(2) 98 36 68 47
contact@groupe-yb.fr www.
groupe-yb.fr/contact

GERMANY / AUSTRIA / SWITZERLAND

NAUTIKPRO GMBH
Am Sandzug 6
67122 Altrip
GERMANY
Tel.: +09 6236 399551
post@nautikpro.de
www.nautikpro.de

GREECE

LEADMAR LTD
31 Vouliagmems
Avenue, Glyfada, 16675,
Athens, Greece
Tel.: +30 210 9700 200
sales@leadmar.gr
www.leadmar.gr

LATVIA / LITHUANIA

RADOX GROUP LTD.
Maskavas sik Riga,
LA-1063, Latvia
Tel: +371-67-144689
info@grandboats.lv

THE NETHERLANDS / BELGIUM / LUXEMBURG

B&G BOATS B.V.
Soldaatweg a 1521 RL
Wormerveer,
The Netherlands
Tel: +31(0)75 614 53 79
info@grandboats.nl
www.grandboats.nl

NORWAY / SWEDEN

GOVI AS
P.B. 1065 — Lundsiden
N-4687 Kristiansand,
Norway
Tel: +47 380 15400
terje@govi.no

SLOVENIA / CROATIA / SERBIA / ALBANIA / KOSOVO / MACEDONIA / MONTENEGRO

MOTO-NAUTIKA
Ptujaska cesta 63, 2204
Miklavž pri Mariboru, Slovenia
Tel: +00386 2629 0400
info@moto-nautika.com
www.grandboats.si

SPAIN

MULTIMAR ALCUDIA
+ 34 971897167
Paseo Maritimo 18, 07410
Puerto de Alcudia Mallorca
Commercial@multimaralcudia.es
mallorcaboathire.com

TURKEY

MERKUR SPOR
Malzemelerei Paz A.S.
Aydintepe mahallesi ES uzeri,
N° 14/F, Tuzla/ Istanbul, Turkey
Tel: +90 216 4945354
info@mercurysport.com
www.mercurysport.com

UAE / INDIA

EMPIRE MARINE
INTERNATIONAL LLC
DY115 Al Jadaf, Dubai, UAE
Tel: +00971 4 324 0 300
sales@empire-marine.com

UKRAINE

GERMANTON
Zatishnaya, 7-B, Kiev, 02081
Tel: + 380 67 5458064
info@grandboats.kiev.ua
www.grandboats.kiev.ua

UNITED KINGDOM

WILLS MARINE LTD
The Quay, Kingsbridge,
South Devon,
TQ7 1JF, UK
Tel: +44 1548 852424
info@willsmarine.co.uk
www.willsmarine.co.uk



GRAND
INFLATABLE BOATS

Potemkina str. 18a, Solonicevka 62370,
Dergachevsky distr., Kharkovskaya obl.,
UKRAINE

Tel: + 380 57 7840125

Tel/fax: + 380 57 7840124

www.grandboats.com

mail@grandmarine.com.ua

YOUR LOCAL DEALER

